

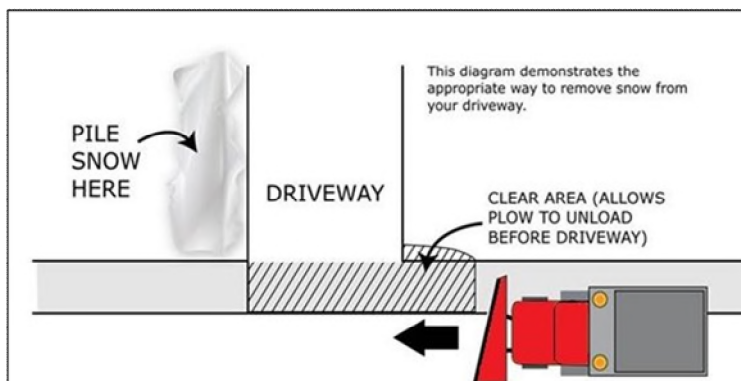
Valparaiso Reminds Community of Snow Removal Plan

To prepare for further winter weather, the City of Valparaiso is reminding residents of snow event plans and sharing the city's snow removal map, indicating priority streets, neighborhoods and cul-de sacs. "Our top priority is the safety of our community. We have an excellent team and a plan for snow removal. We thank residents and drivers for their patience and remind everyone to slow down," said Steve Poulos, Executive Director for Valparaiso City Services.

The snow removal map is available at tinyurl.com/ValpoSnowRoute.

For maximum safety, Valparaiso reminds residents of the following procedures in snow emergencies:

- Per City Ordinance, please remove vehicles from City streets when there is two or more inches of snow. It is nearly impossible to remove snow from the streets when vehicles are lining the curb. Please park vehicles in garages, driveways, or parking lots until the streets are cleared of snow.
- Per City Ordinance, please do not push snow into the roads for your safety and the safety of others. The plowing process inevitably results in some snow being pushed back into already cleared driveways. (Please note, that Valparaiso City Services will not remove snow from driveway entrances.) To reduce the chance of this happening and creating more work for residents, it is recommended that residents clear an open area to the left of your driveway (as you look at the street from your door). This open area gives the street snow a place to land without blocking driveways. Please see the diagram below for more information:



- During snow events, main thoroughfares and emergency routes will be cleared first and will remain the focus in overnight hours. Side streets, neighborhoods, and cul-de-sacs will be cleared once the main thoroughfares and emergency routes are safe to travel.
- Because main thoroughfares and emergency routes are cleared first, try to remain on main routes as much as possible during snow and ice events.
- Park legally and follow alternate side parking rules. City trucks can do a better job clearing to the curb when parking rules are followed. Parking farther away from driveways, alleys and intersections allows equipment to get closer to the curbs.

- Adjust your driving for slick conditions by slowing down and providing added space for braking.
- Please give city trucks added space and stay back from the trucks salting or brining streets to ensure the product hits the streets instead of your car.
- Sign up for text or email notifications at tinyurl.com/ValpoAlert
- To assist with fire protection, please clear your hydrant of snow and ice.
- To allow for efficient removal of trash and recycling, please clear snow and ice around and on top of your garbage and recycling totes.
- For public safety, shovel your sidewalk within 24 hours after the snow has stopped falling.
- Keep an eye on neighbors, particularly seniors and others who may have difficulty clearing snow or accessing help. The Valparaiso Police Department offers a Contact Assistance Referral Program (CARE) to check on residents with special needs when the weather is severe. To register yourself or a loved one, contact the Valparaiso Police Department at (219) 462-2135.